

# Blatchford Products Ltd

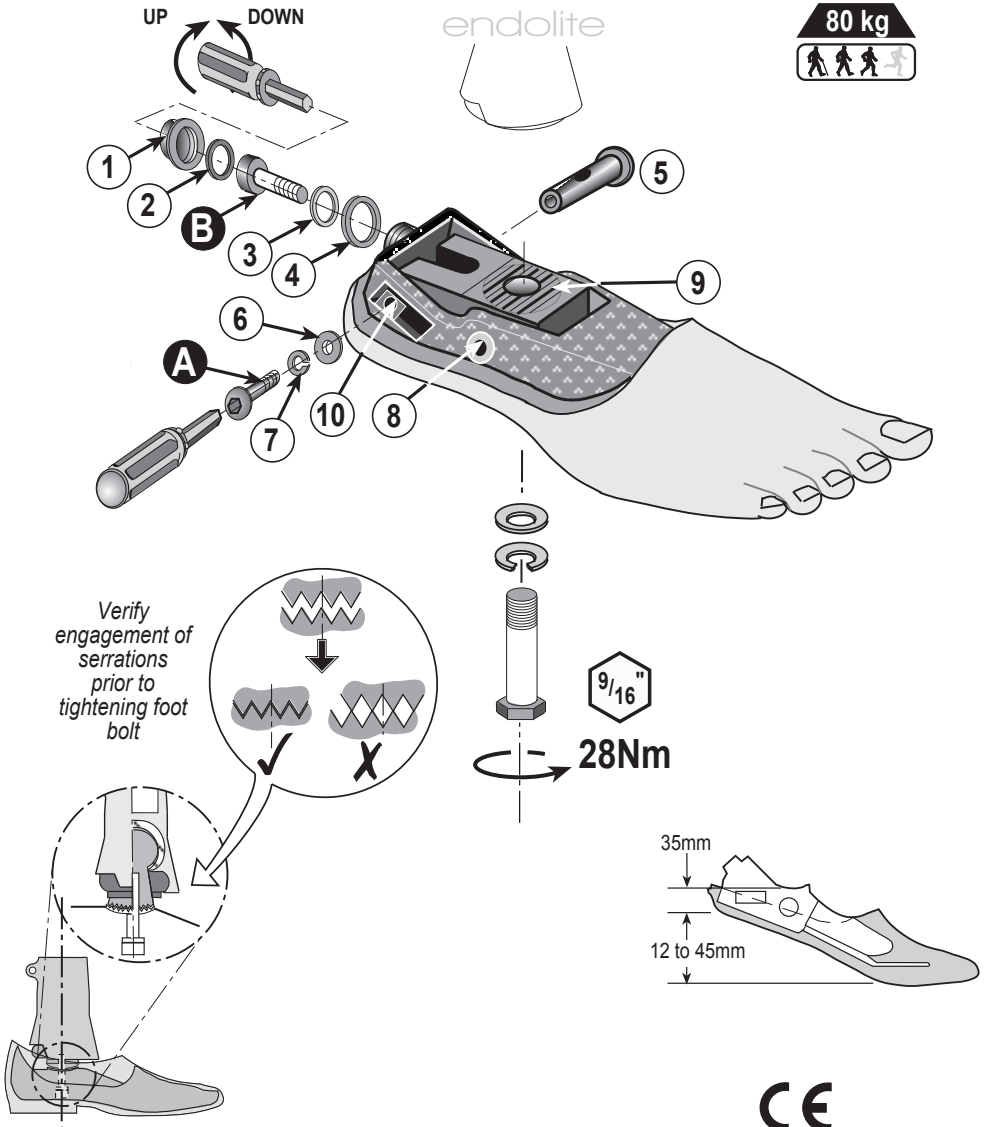
Lister Road, Basingstoke, Hampshire,  
RG22 4AH, United Kingdom  
Telephone: +44 (0)1256 316600  
Facsimile: +44 (0)1256 479705  
Email: sales@blatchford.co.uk  
www.endolite.co.uk



## endolite

get busy living

### Patient Adjustable Foot 509127 - 134



## Adjustment

1. Release Locking Screw **A** (see diagram).
2. Using Adjustment Key (940052), turn Adjuster Screw **B** clockwise to lower and anti-clockwise to raise heel height.
3. Prosthetist to advise patient that the prosthesis must be perpendicular after adjusting heel height.
4. Tighten Locking Screw **A**.

## NOTES

1. Do not turn Screw **B** while Screw **A** is locked as damage may occur.
2. The application of unnecessary force at end of travel adjustment can cause irreparable damage to mechanism.

## Fitting

1. Adjust mechanism to give access for Foot Bolt and attach foot to ankle. Ensure Locking Screw **A** is on lateral side of Foot.
2. Set foot to lowest position (12mm heel height) when measuring limb length.
3. Remove foot, bond ankle fairing to foot cosmesis only and shape the fairing.
4. Cut holes in fairing in line with Locking Screw **A**, and Adjusting Screw **B** using a 3mm ( $1/8$ " dia. cutter-940401.
5. Replace foot and ensure serrations are correctly aligned.  
Torque Foot Bolt to 28Nm (250 lbf. in).
6. Cut small holes in inner stocking to align with holes in fairing.
7. The Foot Bolt should be periodically checked for loosening.

## Servicing Patient Adjustable Foot

### Use Servicing Kit 509927

Under normal conditions, the Patient Adjustable Foot requires no special servicing. However it may be necessary to fit the replacement items provided in the Servicing Kit 509927 if, after a prolonged period of high activity, the patient reports movement within the foot. An annual service inspection is recommended.

### Replacing Thrust Washers and Adjusting Screw

1. Remove foot from limb and ankle fairing.
2. Unscrew Retaining Cap ① and remove bronze Thrust Washer ②
3. Remove Adjuster Screw **B** and nylon Thrust Washer ③ and Retaining Cap Washer ④
4. Remove Adjuster Pin ⑤
  - a). If the Pin is the early version plain shaft type, push out from side of foot.
  - b). If the Pin is the later version headed type, remove by unlocking Screw **A** and withdraw the Adjuster Pin ⑤, Washer ⑥ and Lock Washer ⑦
5. Push out Chassis Pivot Pin ⑧, slide Chassis ⑨ out of the Keel Assembly and discard the two Outer Adjuster Guide Blocks ⑩
6. Re-assemble in reverse order using replacement parts from the Servicing Kit. Ensure Locking Screw **A** is on lateral Side of Foot.
7. Lightly lubricate Adjuster Pin ⑤ and threads with STP Oil (928105).  
DO NOT LUBRICATE items within the Retaining Cap, i.e. Thrust Washers, etc.
8. Add 1 Drop of Loctite 222 (926001) to thread of Retainer Cap ① before refitting.
9. Refit as described in **Fitting**.